

Violoncello o Fagotto

SONATA A DOPPIO CORO

Primo coro

Maurizio Parma

Allegro

The image displays a musical score for the first movement of a double concerto, specifically for the Violoncello or Bassoon part. The score is written in bass clef with a key signature of three sharps (F#, C#, G#) and a common time signature (C). The tempo is marked as 'Allegro'. The piece begins with a forte (*f*) dynamic. The notation consists of ten staves of music, with measure numbers 5, 10, 14, 18, 21, 24, 27, 31, 35, and 39 indicated at the start of their respective lines. The music features a variety of rhythmic patterns, including eighth and sixteenth notes, and rests, creating a complex and rhythmic texture.

43



47



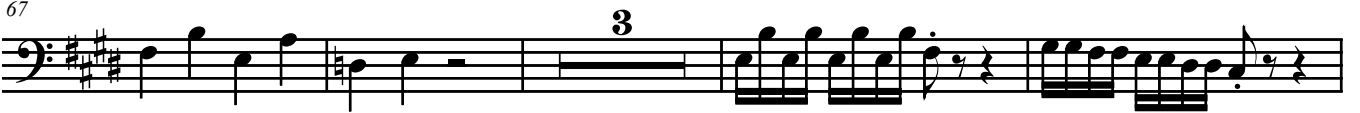
56



61



67



74



78



81



84



87



92



99



102



106



110



114



118

