

# Violino 2

## SONATA CONCERTATA

### Seconda parte

Maurizio Parma

Allegro; su melodia di Daniele Avella



2  
44



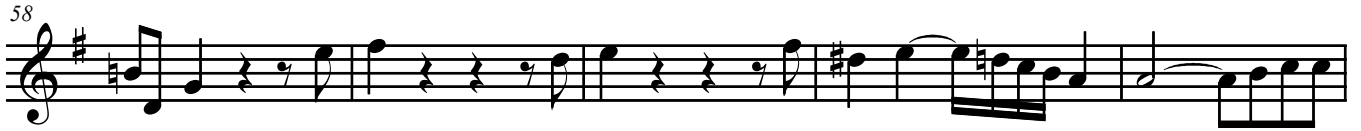
48



53



58



63



68



72



75



79



83



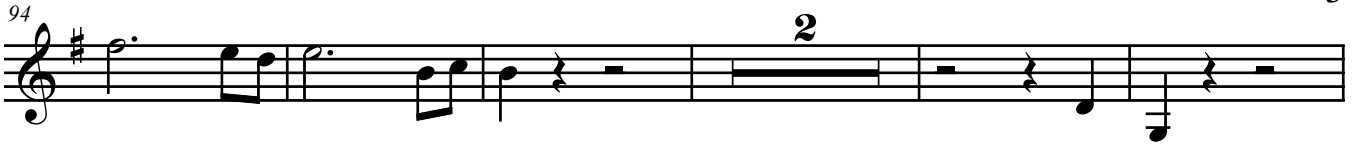
86



90



94 2



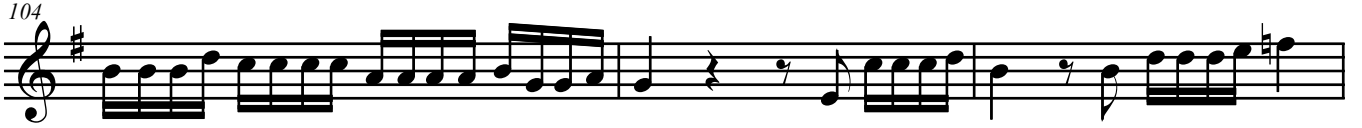
Musical staff 94, starting with a treble clef and a key signature of one sharp (F#). The staff contains a sequence of notes: a dotted quarter note, followed by two eighth notes, a quarter note, and a half note. There are several rests and a double bar line. A large number '2' is positioned above the staff.

101



Musical staff 101, featuring a treble clef and a key signature of one sharp. The staff contains a complex melodic line with many sixteenth and thirty-second notes, interspersed with rests.

104



Musical staff 104, featuring a treble clef and a key signature of one sharp. The staff contains a complex melodic line with many sixteenth and thirty-second notes, interspersed with rests.

107



Musical staff 107, featuring a treble clef and a key signature of one sharp. The staff contains a complex melodic line with many sixteenth and thirty-second notes, interspersed with rests.

111



Musical staff 111, featuring a treble clef and a key signature of one sharp. The staff contains a complex melodic line with many sixteenth and thirty-second notes, interspersed with rests.

115



Musical staff 115, featuring a treble clef and a key signature of one sharp. The staff contains a complex melodic line with many sixteenth and thirty-second notes, interspersed with rests.

119



Musical staff 119, featuring a treble clef and a key signature of one sharp. The staff contains a complex melodic line with many sixteenth and thirty-second notes, interspersed with rests.

122



Musical staff 122, featuring a treble clef and a key signature of one sharp. The staff contains a complex melodic line with many sixteenth and thirty-second notes, interspersed with rests.

126



Musical staff 126, featuring a treble clef and a key signature of one sharp. The staff contains a complex melodic line with many sixteenth and thirty-second notes, interspersed with rests.

130



Musical staff 130, featuring a treble clef and a key signature of one sharp. The staff contains a complex melodic line with many sixteenth and thirty-second notes, interspersed with rests.

134



Musical staff 134, featuring a treble clef and a key signature of one sharp. The staff contains a complex melodic line with many sixteenth and thirty-second notes, interspersed with rests.

138



Musical staff 138, featuring a treble clef and a key signature of two sharps (F# and C#). The staff contains a complex melodic line with many sixteenth and thirty-second notes, interspersed with rests, ending with a double bar line.